



Contents

When what how why.....	2
Registration	2
Car Parking / Observatory Science Centre	3
Baggage area	4
Target Time Bands	4
Riders Code of Conduct	4
In the Event of an Accident	4
Assistance during the Ride	4
Route Signage	5
Litter	6
What to bring?.....	6
What to wear?	6
Break downs	6
Feed stations	6
Toilets	7
What Happens at the Finish?	7
Photography	7
Event Website.....	7
General Queries.....	7
How to get there	8
Velopace Event Partners	9



When what how why

- Date Sunday 9 April 2017
- Distances 102 kilometres / 66 kilometres
- Ascent 1593 metres / 1037 metres
- **Start Time from 08:00 to 09:00**
- Start/Finish The Observatory Science Centre, Herstmonceux BN27 1RN

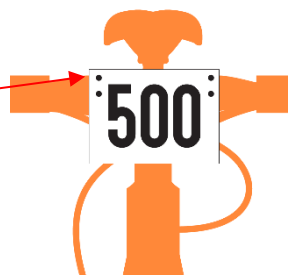
The Classics are for the hard riders, testing physical, mental and mechanical resilience!

Registration

In the Velopace HQ tent at the entrance to the Science Centre - **open at 7.00am**. At registration you will be given:

- **Bike/Rider Number, zip ties & Timing Chip** - You will be issued with a number board which must be secured to the handlebars of your bike with the cable ties. This provides you with access to the feed stations and entitlement to the event support
- **Helpline card** – this gives you emergency contact details if you need to contact the organiser while out on the ride – **VELOPACE HELPLINE NUMBER – 07593 099680**
- **Timing Chip** - Your timing chip will be stuck on the back of the number board, so please ensure your number is attached to the front of your handlebars, otherwise you may not get an officially recorded time. Please don't bend it – it may damage the chip

Thread zip ties through punch hole at rear of board and loop back to tie round bars



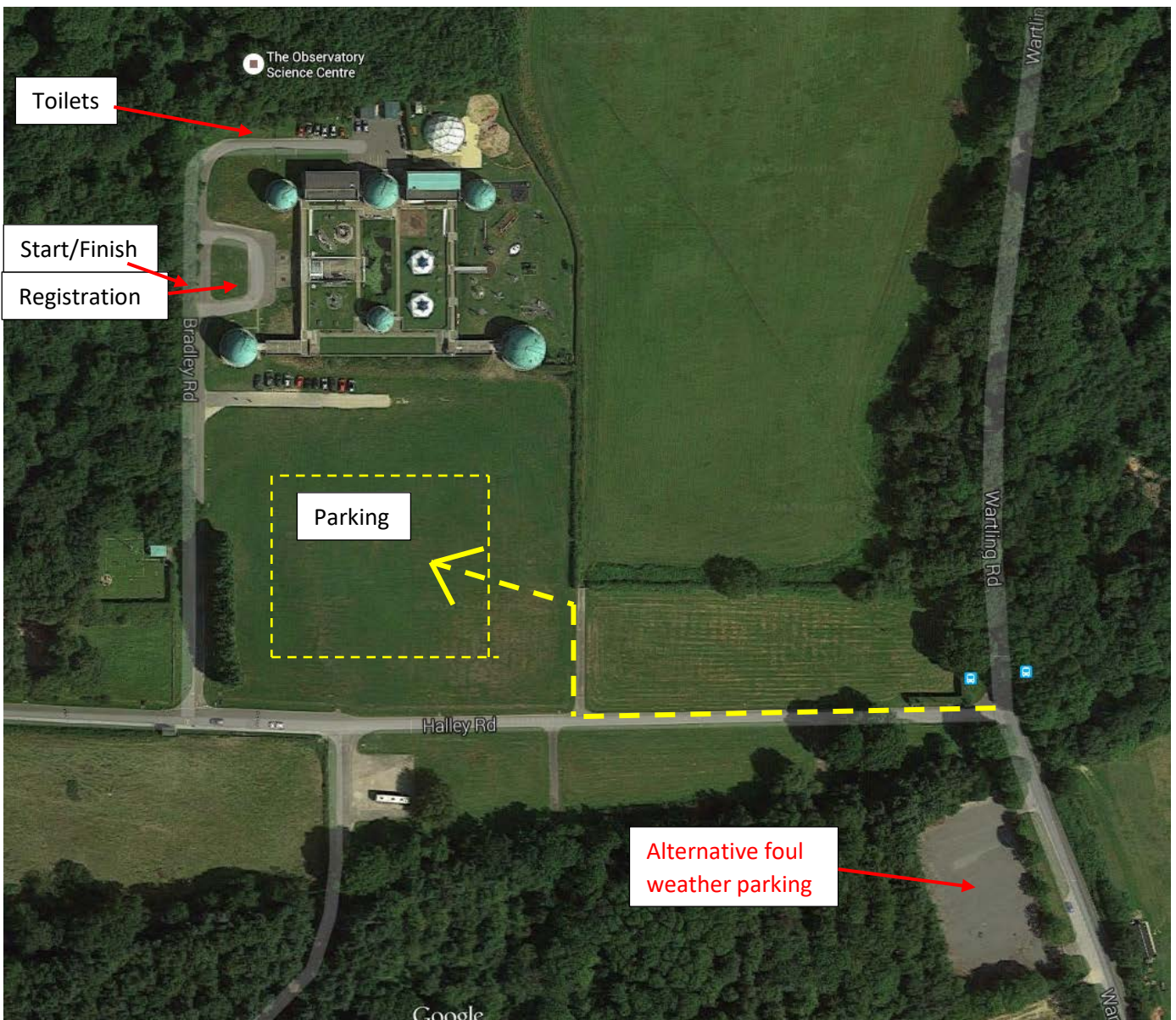
- **Under 16's** please contact the event organiser for a parental consent form

velopace



Car Parking / Observatory Science Centre

Parking is available in the field in front of the Science Centre. Please park in the designated areas. We are very fortunate to be able to use the Observatory Science Centre as the venue for the event. The centre is run by Science Projects Ltd, which is a registered charity No. 298542. The centre receives no public funding and relies on contributions and admission charges to keep it operational. We have been fortunate to negotiate a discount for families to enter the Centre, pick up a Velopace band at registration. And please drop a coin into the "parking bucket" and know that this will go direct to the Centre - anything extra makes a big difference and will help to maintain and develop this unique centre.



velopace



Baggage area

There will be a bag drop at the start area. Someone should be there all of the time, but we cannot be held responsible for any loss or damage. Any belongings left in cars should be left out of sight

Target Time Bands

[Click here for the time bands](#) – these are based on the inaugural ride in 2015, so those who did the ride will know what they've got to do to better their previous performance

Riders Code of Conduct

The Spring Classic takes place on public roads, so you need to follow Highway Code regulations just as you would on a regular ride. Please ensure you pay particular attention at major road junctions & crossings.

You should familiarise yourself with the route as much as possible before the event.

Please take extra precautions when in the vicinity of other road users, be especially aware of horses and their riders and ride with care through larger villages and towns.

The British Horse Society has a Code of Conduct for Horse Riders & Cyclists – access it here for some very relevant information: <http://goo.gl/CyfKhT>

In the Event of an Accident

If you are involved in a serious accident requiring immediate medical attention, **ring 112 from your mobile (this gives a GPS location)**, then the **Velopace helpline number**

Assistance during the Ride

Should you require assistance please phone the **Velopace helpline number**. If you decide to drop out of the ride for any reason, please let us know by calling the **Velopace helpline** so we can account for you and make arrangements for your return



Route Signage

The routes will be signed, with **ORANGE** and **BLACK** direction signs. Please be careful on narrow sections of road and descents, keeping a safe distance between yourself and the rider in front, especially if it's wet

REMEMBER – NO SIGN – NO TURN



CAUTION

- There is a descent into Town Row at around the 47 km mark, with a right turn on a bend just before a rail bridge. Caution needed here.
- At the 54 km mark, just before the feed station, the route uses the A26 for a short stretch before turning right on a slip road, signed The Forstal. Care needed here.
- The left turn to Fairwarp at 70.3 km is sharp – you don't want to miss it, as it's a long climb back!
- After the climb up Oldlands Hill (Fairwarp) the route again crosses the A26 in a dog leg onto Perrymans Lane. Again, caution is needed here.
- There's a stretch of the A272 into Buxted that is likely to be busy, so be aware.
- Horam can always be busy, and the last leg of the ride along the A271 from Herstmonceux back to the Science centre is also often a busy stretch of road.



Litter

There will be litter bins at the event HQ and at feed stations. Please use them and don't drop any litter en route - it gives us cyclists a bad name!

What to bring?

Although the event will be supported by feed stations en route, and a sweep vehicle, we recommend that you bring:

- a multi tool
- two spare tubes
- tyre levers
- a working pump
- adequate hydration and food
- a mobile phone
- a small amount of cash in case of emergencies

What to wear?

We insist that all riders wear a helmet during the event, in order to comply with insurance requirements.

NO HELMET, NO RIDE.

Weather is changeable, especially when moving in and around East Sussex! Have a look at the [Met Office Website](#) for the forecast. Be prepared, bring extra gear with you in case conditions change from leaving home

Break downs

There will be a sweep vehicle trailing the back markers. Call the helpline if you are in trouble and we will endeavour to either get you back on the road or back to HQ

Feed stations

Eridge Village Hall, Eridge Green (nr Tunbridge Wells) TN3 9JD, at 53 kilometres, is the location for the feed station on the 102 km ride this year, and on the shorter 66 kms route it is Broad Oak Village Hall, Burwash Road TN21 8SS at 38 kms. Look out for the feed station flag. Hot food plus energy supplements and water

velopace



will be provided. Make sure you take some fuel on board, as there are still some testing climbs ahead. Please respect your surroundings at the feed station.

Toilets

There are Portaloos provided at the start area. The toilets inside the Science Centre are only available to anyone purchasing an entry ticket to the Centre. Please use Public Toilets on the route, rather than natural surroundings, as doing so may put the future of the event in jeopardy. There are toilets at the feed station.

What Happens at the Finish?

The finish line is the same as the start line. **TAKE EXTRA CARE ENTERING THE GROUNDS, AS VEHICLES MAY BE LEAVING.**

Your finish time will be recorded as you cross the line. Please leave the area as clear as possible for riders finishing behind you. **Make sure you claim your bottle of Spring Classic beer courtesy of BeerMe Brewery from the Belgian Café in Eastbourne - a great (drinkable) memento of the ride – BRING YOUR RIDER NUMBER TO THE TIMING BOOTH TO EXCHANGE IT FOR A BOTTLE AND YOUR MEDAL.**

Times will be available at the ticket printer at the finish and will also be posted via the link on the event website.

Photography

Photos will be uploaded on to the website to share on social media as soon as possible after the event.

Please share freely with your friends

Event Website

velopace.com/springclassic

General Queries

Email: info@velopace.com

velopace



How to get there



- The Start/Finish and Registration are all located at The Observatory Science Centre, Herstmonceux BN27 1RN
- **Road** - From central London (65 miles) M25, then either M23/A23 signed to Brighton, then A27 eastwards, A259 to Pevensey Roundabout, then north signed to Wartling. If approaching from the M25 / A22 direction, exit the A22 at the Boship roundabout onto the A271 (follow signs to Bexhill (A259) then after Windmill Hill turn right at signpost Wartling, Eastbourne (A259) & Herstmonceux Castle
- **Rail** - The nearest train station is Polegate (info at [National Rail Enquiries](#) or telephone 08457 48 49). From Polegate, it's a taxi, sorry, unless you ride to the start

velopace



Velopace Event Partners

Our partners help us deliver superb cycling events.

Beer Me Brewery

www.beermebrewery.com

Our passion for food and quality drinks have always been our main drive. After years of studies, hard work and TASTING, since December 2014 we are really proud to brew our own beers on site.

We do select and use only the best ingredients, focusing on the purest brewing laws. Our beers are unfiltered and served fresh directly from the brewery.

Our aim is to bring you a great and unique taste at the best price.



TrainSharp Cycle Coaching

www.trainsharpcyclecoaching.co.uk



TrainSharp is a UK based cycle coaching company set up by Jon Sharples. Together in partnership with Sean Yates their coaching strategies make for a formidable team. As you can imagine they have many success stories where they have transformed beginners into top cyclo-sportive riders, helped juniors find pro team placements and good cyclists become even better than they thought they could become.

velopace



Yellow Jersey Bicycle Insurance

www.yellowjersey.co.uk

We created Yellow Jersey Insurance when we realised existing options, through home insurance and other stand-alone cycle insurance providers, didn't offer a product that meet all of our needs. We found that as enthusiasts we weren't covered for the things we needed the most, such as racing home and abroad or when our bike was packed up in its box and manhandled by baggage handlers.



Official Partner

RideWithGPS.com

www.ridewithgps.com

Find Great Rides. Ride with GPS members have uploaded millions of rides of all levels that you can access. If you're looking for an incredible challenge or a leisurely stroll through the park, we'll get you there ... and back home again. Velopace is a RideWithGPS Premium member and we use RideWithGPS.com to map our events and deliver the route to you.



The Observatory Science Centre

www.the-observatory.org

Spectacular hands-on science and discovery among the domes and telescopes of a world famous astronomical observatory.

